



## The pioneer in Online Data Delivery to Multiple Listing Services

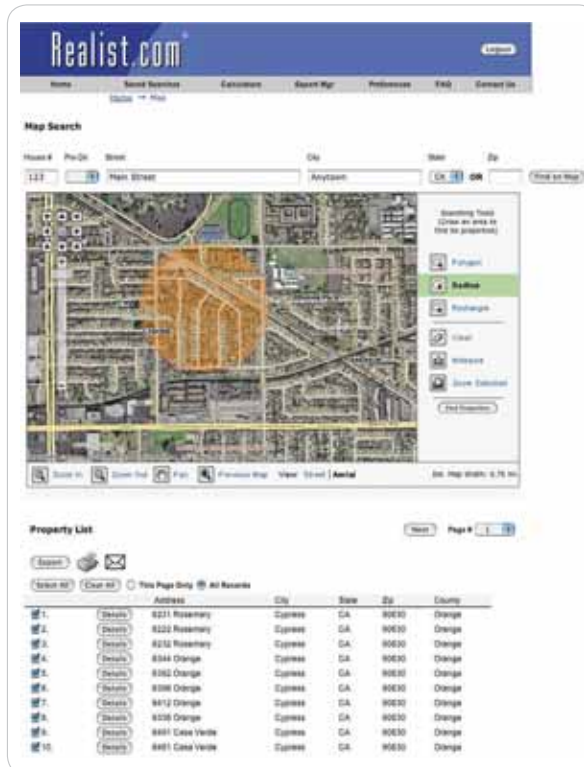
From the very beginning, Realist® has been the leader in providing robust, feature-driven functionality that enhances the capabilities of Multiple Listing Services (MLS). Realist links public record data with any Web-based MLS system for seamless delivery of in-depth property data, market information and now—street and aerial maps. Realize the benefits of integrated data, enhanced productivity and systems support in one browser application.

### Seamless integration

Realist integrates with any Web-enabled MLS system allowing users full access to Realist data such as tax rates, street and aerial maps, sales comparables and more. This highly customizable interface with smart searching capabilities translates to ease-of-use and unprecedented MLS functionality.

Conduct searches using several property and owner characteristics including owner name, address, street telephone numbers, tax ID or Assessors Parcel Number (APN)

- › Save and re-use queries as needed
- › Combine MLS and Realist data for detailed reports
- › Navigate back to listings from Realist effortlessly



### Features

- › Link directly from a listing to its corresponding public record
- › Perform simple to extensive searches for listing kits, farming lists and contact management
- › Auto-populate MLS listings with Realist data
- › Access annotated tax maps, street maps, flood maps and document images
- › Pull comprehensive Comparable Market Analysis Reports (CMAs) that include For Sale By Owners (FSBO) data
- › Save and re-use search queries
- › Access the ValuePoint® automated valuation model (AVM)

*Our dynamic mapping solution allows you to identify subject properties and their proximity to freeways, waterways, schools, shopping areas and more.*

### Powerful and flexible data retrieval functionality.

Providing the most advanced search functionality to MLS members, Realist is flexible and easy to manage.

- › Save time and standardize data by appending new MLS property listings with Realist.com data
- › Export real estate data for contact management applications, farming lists and mailing labels
- › Improve direct marketing efforts using the dynamic mapping solution to search and capture property data visually utilizing street maps with aerial overlays
- › Create selling tools, such as home-value reports, listing kits and more with custom reporting options

### Best-in-class data from a trusted leader.

- › Access 97% of all U.S. real estate transactions
- › Daily updates of real estate data from thousands of public and private sources

### Customer support

- › Customer and technical support is available through Client Services, Monday through Friday, 6 a.m. to 5 p.m. PT.

## Features

### Property search options

- › General query with property characteristics
- › Owner information
- › Assessors Parcel Number (APN)
- › Dynamic mapping solution
- › Comparable statistics

### Search criteria

- › Year built
- › Land use
- › Number of bedrooms and/or baths
- › Owner occupied or absentee owner

### Multiple custom report options

- › Data is available in several formats including HTML, .pdf, raw data and common mail label formats
- › Detailed property reports
- › One- or two-line property lists
- › Comparable property report
- › Dynamic mapping solutions:
  - Tax assessor maps
  - Flood maps
  - Aerial maps with street map overlays

---

To learn more about Realist, call 866.774.3282 or visit [facorelogic.com](http://facorelogic.com) today.

[www.facorelogic.com](http://www.facorelogic.com)

866.774.3282